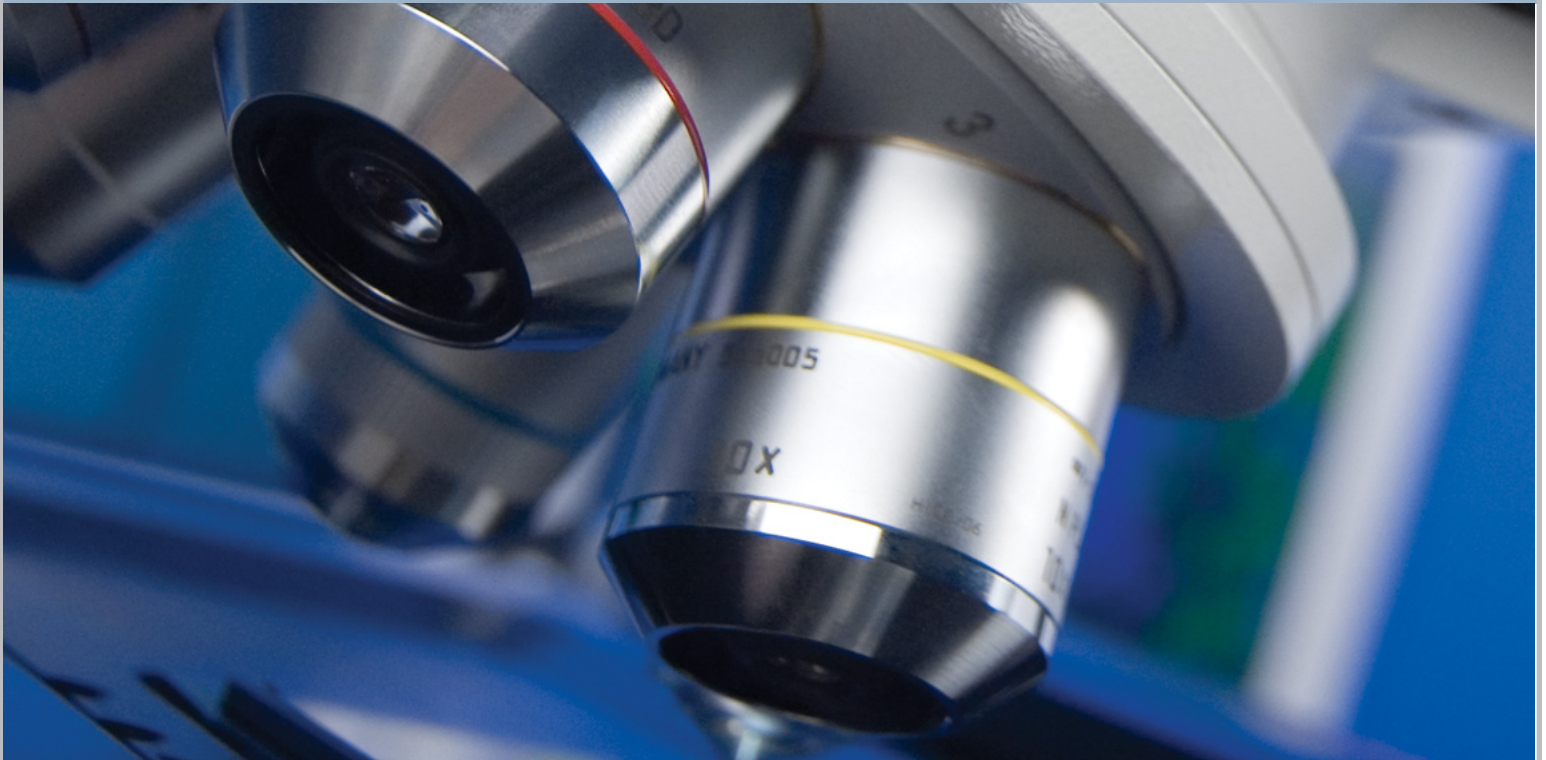


The perfect partner for single
image analysis applications



CLEMEX VISION LITE

Pre-Built Imaging Routines for the Automotive Industry

Integrated solutions

We integrate both software and hardware to produce the most reliable image analysis system on the market.

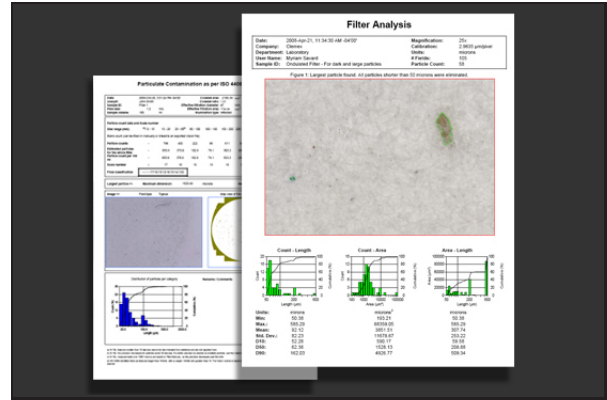
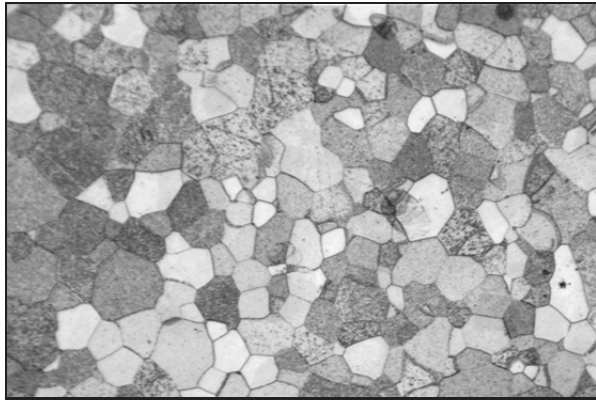
Single applications

Combine Clemex Vision Lite with one or more Application Modules to perform the analysis of your choice.

CLEMEX VISION LITE

The perfect partner for single image analysis applications

Clemex Vision Lite is ideally suited to repetitive applications which can be easily analyzed with our optional Application Modules. Together with these pre-built routines, the abridged version of Clemex Vision PE offers you the tools you need to analyze, measure and produce standardized reports. It presents a competitive option for labs seeking a simplified yet automated solution.



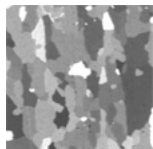
Application Module: Grain Size

Clemex Grain and Cell Sizing Module allows users to measure grain intercept, intercept counts, intersection counts, grain boundary length, and grain areas in accordance with ASTM E 112, ASTM E 930, and ASTM E 1382 methods, with validation using the Heyn method.

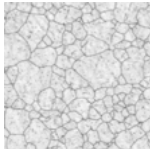
Professional-Looking Adaptable

Reports are generated automatically after each analysis and can be customized to suit your needs. You can add a company logo, images taken during analysis, graphs and charts, statistics and results.

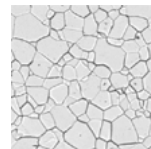
Related Reports



Grain size in anodized aluminum (2)



Grain size in steel



Grain size in titanium

Distributed by:



Clemex Technologies inc.
800 Guimond, Longueuil, J4G 1T5, Canada
Telephone: 1.888.651.6573
info@clemex.com - www.clemex.com