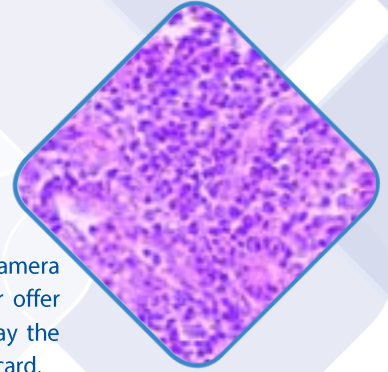
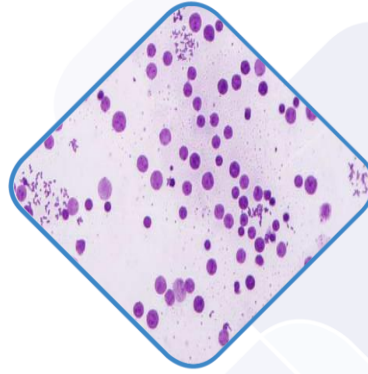


OPTA-TECH HDMI CAM MICROSCOPE CAMERA





OPTA-TECH HDMI CAM Microscope Camera

The OPTA-TECH HDMI CAM Microscope camera sets new standards on the microscope camera market – both in terms of image quality and overall functionality. The new addition to our offer enables the user to work not only with the camera connected to a computer, but to display the image directly on a HD monitor, TV or with a projector as well as to save the images on the SD card.

Technical parameters*

| | |
|--|--|
| Optical system | <ul style="list-style-type: none"> - sensor: 1 / 2.7" SONY - live preview resolution: 1920x1080 (Full HD), - max. photo resolution: 3264x1836 (6MP) - when working with the computer - video capture: 1080 – 30 fps - exposition time 0.001s-10 s. automatically and manually controllable - automatic and manual white balance |
| Connectivity | <ul style="list-style-type: none"> - USB 2.0, HDMI, SD card slot - HDMI, USB, simultaneous USB + HDMI FullHD |
| Microscope connection | <ul style="list-style-type: none"> - standard C-mount |
| System requirements (connected to a computer) | <ul style="list-style-type: none"> - free USB 2.0 port - Intel i3 or equivalent processor - RAM: 4 GB - System: Windows Vista/7/8- 32/56 bit - CD-ROM |
| Image settings | <ul style="list-style-type: none"> - built-in on-screen image settings menu with possibility of camera control by mouse directly connected to the camera - automatic parameter setup (live preview) - connected to a computer: OptaView IS |
| Display and recording | <ul style="list-style-type: none"> - live preview on a TV or HD monitor - simultaneous comparison on one screen of live preview of sample and of image recorded earlier - record movies on a memory card - transfer of the image to the computer - recording images and video formats: JPG, BMP, TIFF, AVI; - image HDR function (High Dynamic Range) - the ability to perform measurements in the preview "live" mode on sample without saving the images on the hard disk - image sticking function in the XY plane - photo colorization feature according to the standard fluorescence staining (over 200 presets for common color staining) |
| Accessories | <ul style="list-style-type: none"> - mouse, HDMI cable, USB cable, AC adapter |

**Due to constant technological progress, the parameters provided above are purely informational in nature, depict an example configuration and are liable to change.*