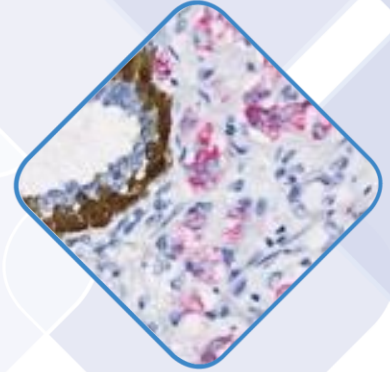
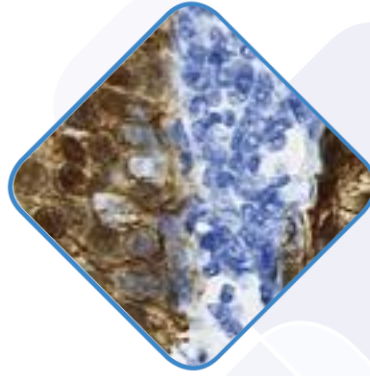


LAB 50 Series Microscope





LAB 50 Series Microscope

LAB 50 series microscope is a high-class, new generation laboratory device with a very wide selection of accessories and razor-sharp optics that make it the best solution to every user's research needs. This series of microscopes is designed for large laboratories in hospitals and veterinary clinics. LAB 50 series microscope can be outfitted with a digital image acquisition system. Modern software enables the user to manually adjust the camera parameters from the computer, archive the captured images with ease and conduct measurements.

Optional Phase contrast, Dark field, DIC, Fluorescence sets of accessories allows advanced biological sample imaging.

Technical parameters*

Optical system	Infinity color corrected optical system.
Viewing head	- Inverted image, 30° inclined gemel trinocular head, interpupillary distance: 48-75mm. - Splitting ratio R:T=100:0 or 20:80 or 0:100, Observation tube Field No 25. - Ergonomic tilting head 5-35° (optional).
Eyepiece	High eyepoint wide field plan eyepiece PL10X25mm, diopter adjustable Optional: WH 10x/22mm.
Objectives	Plan semi-apochromatic fluorescence objectives: <ul style="list-style-type: none"> - 4X N.A. 0.13 - 10X N.A. 0.3 - 20X N.A. 0.5 - 40X N.A. 0.75 - 60X N.A. 0.9 (optional) - 100X N.A. 1,28
Nosepiece	Quadruple, Quintuple or Sextuple nosepiece - revolving with a slot for analyzer or DIC slider.
Frame	Rigid and vibrations free frame; Biological frame (transmitted), low-position coaxial coarse and fine adjustment, coarse adjustment distance: 25mm; fine precision: 0.001mm. With coarse adjustment stop and tightness adjustment.
	Illuminator Built-in Koehler illumination for transmitted light 12V100W halogen bulb (pre-

	centered). Light intensity LED indicator, Light preset switch for photography, Built-in filters (LBD-IF, ND6, ND25).
Stage	Right Hand coaxial stage with Slide holder; Double layers mechanical stage, size: 187mm X168mm; moving range: 80mm X55mm; precision: 0.1mm; two-way linear drive, tension adjustable.
Condenser	Swing-out type achromatic condenser (N.A.o.g).
Transmitted Illumintaion	12V/100W halogen lamp house for transmitted light, center pre-set, intensity adjustable.
Power supply	60-50 Hz at 220-240V.
Optional accesories	Cameras; PH/DF module; DIC module; Polarization set; FL module; MultiView head attachment for consultation.

** Due to constant technological progress, the parameters provided above are purely informational in nature, depict an example configuration and are liable to change*