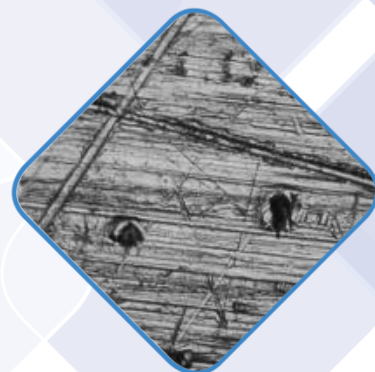
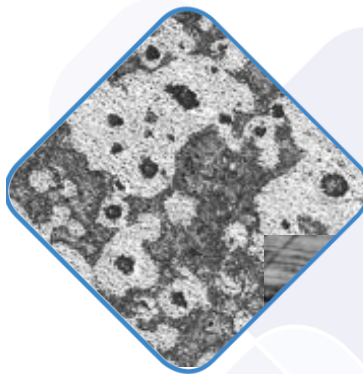


## LAB 50 M Series Microscope





## LAB 50 M Series Microscope

LAB 50 series is a high-quality next-generation microscope with an extremely wide selection of accessories, built-in set filters and high-end optics, enabling it to adapt to the individual needs of every user. This series of microscope is ideal for research laboratories and quality control.

Microscope LAB 50 series may be equipped with a digital image recording system. Modern software allows direct control of camera from the computer and easy archiving of photos and measurements. Optional software for acquisition, archiving and image analysis can be developed based on the individual user's needs, thus creating new measurement capabilities.

### Technical parameters\*

<b>Optics</b>	Infinity – corrected optical system
<b>Viewing head</b>	Trinocular. Adjustable interpupillary distance: 50-76mm. Eyepiece inclination: 30°. Dioptric correction: +/- 5 dioptrii
<b>Eyepieces</b>	Wide field of view PL10X/25 mm. Optional PL 10X/26,5 mm
<b>Revolving nosepiece</b>	Quintuple nosepiece, Sextuple nosepiece, Septuple nosepiece, DIC spot
<b>Objectives</b>	Semi-plan apochromatic: 5X, 10X, 20X, 50X, 100X
<b>Condenser</b>	Condenser: N.A.0.9 / 0.22 (SWING)
<b>Focus adjustment</b>	Fluorescence frame (transmitted), low-position coaxial coarse and fine adjustment, coarse adjustment distance: 25mm; fine precision: 0.001mm. With coarse adjustment stop and tightness adjustment.
<b>Stage</b>	Double layers mechanical stage with convenient vertical XY manipulators. Dimensions: 102 x 105mm.
<b>Illumination</b>	Reflected and/or transmitted adjustable light source: 12V/100W halogen. Built-in filters: ND6, ND25 and LBD and free spot for additional filter. LED indicator of light intensity with the function of Reset - return to the set value
<b>Base</b>	Ergonomic, metal base with grip for moving the device and built-in hex adjustment key slot.
<b>Observation techniques</b>	Brightfield (BF), Darkfield (DF), polarization (POL), DIC reflected light.
<b>Additional accessories</b>	Microscope camera, image capture and analysis software.

\* Due to constant technological progress, the parameters provided above are purely informational in nature, depict an example configuration and are liable to change