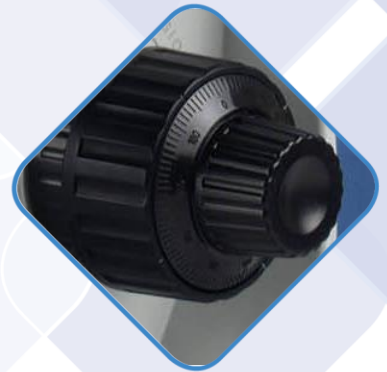


MB – 200 LCD Series Microscope





MB-200 LCD Series Biological Microscope

MB-200 series microscopes are designed for laboratories, hospitals and animal clinics. Ergonomic focus adjustment knobs for increased work comfort. New, high power adjustable light with coded nosepiece and adjustable color temperature provides superb image light control. LED EPI-fluorescence module can be installed on the device.

Specyfification*

Viewing head	Head with eyepiece adjustment 50-75mm, diopter correction +/- 5 diopters, tilted 30 degrees Head: binocular or trinocular head (option)
Eyepieces	Wide field, PL 10X/20mm or 10X22mm (option)
Objectives	Plan achromatic, infinity-corrected: 4X, 10X, 20X, 40X, 100X (optional: 60X)
Revolving nosepiece	quintuple coded revolving nosepiece
Condenser	N.A.1.25 Abbe condenser with iris diaphragm and PH/DF slot
Focus adjustment	Coaxial, asymmetrical, high-precision coarse and fine focus adjustment knobs
Stage	Mechanical stage with convenient vertical XY manipulators, Dimensions: 160x152mm. Movement range: 76x50mm
Illumination	Transmitted light: Bright adjustable 3W LED light source with adjustable color temperature (3000-5000K)
Base	Stable aluminum base. Convenient polarization filter holder located under the viewing head (set of filters – optional)
Accessories	Microscope camera, PH set, DF set, Polarization set, FL module

**Due to constant technological progress, the parameters provided above are purely informational in nature, depict on example configuration and are liable to change.*