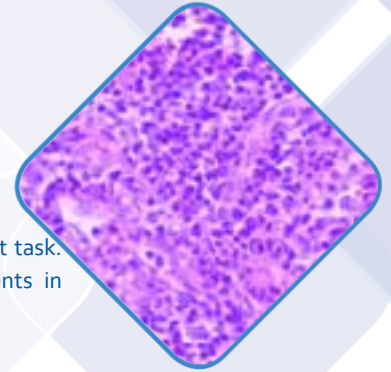
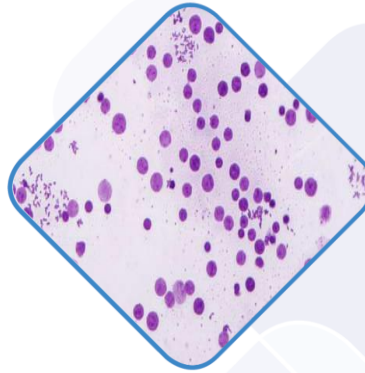


Semiautomatic Rotary Microtome MR Series





Semiautomatic Rotary Microtome OPTA-TECH MR-335

Semiautomatic Rotary Microtome OPTA-TECH MR-335 is a reliability, high quality and comfort task. Stable design and high precision make it a multipurpose tool that be equal to requirements in biological laboratories, medical and industrial applications.

Product specifications:

- Touch Screen Panel
- Adopted Germany stepper motor drive ensure section more precisely, more reliable and quiet
- The touch screen panel shows section and trimming thickness, section counter, distance stroke of Clamp, easy to do adjustment of Trimming or Section thickness in the touch screen panel
- Special function of specimen retraction which avoid the damage due to the attrition between sample and the back of knife do that the sectioning is more smooth and the life of the knife is more longer
- The hand wheel can be locked in any position to ensure the sectioning as safe and convenient as possible
- Universal cassette clamp and standard specimen clamp
- The waste tray can be dissembled easily
- Safely alarm system, overload protection function, sleep mode protection
- The special blade carrier can use high profile blade or low profile blade

Technical Data*

Section thickness range	0-100µm: 0µm - 10µm in 1µm - increments 10µm – 20µm in 2µm - increments 20µm – 50µm in 5µm - increments 50µm – 100µm in 10µm - increments
Trimming section thickness range	0µm - 500µm
Specimen stroke	Horizontal: 28mm Vertical: 60mm
Specimen retraction	12µm
Precision error	± 5%
Section size	Max: 50 x 45mm
Net weight	30kg
Dimension	520 x 450 x 300mm

* Due to constant development of our technology, parameters are for information only, they refer to the example configurations and are subject to change.