

OPTA-TECH MI20





Revolutionary imaging software

From the user's point of view, redefining the image acquisition - editing - measurement - report output workflow process. The inclusion of latest image processing algorithm, effectively improving productivity.

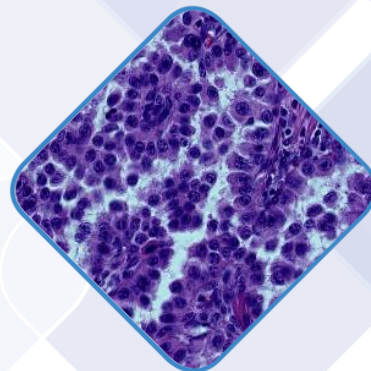
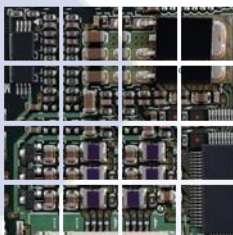


Real-time depth-of-field fusion

Which produces perfect results just by switching the depth



Real-time image stitching



Excellent imaging performance

Sony professional CMOS sensor

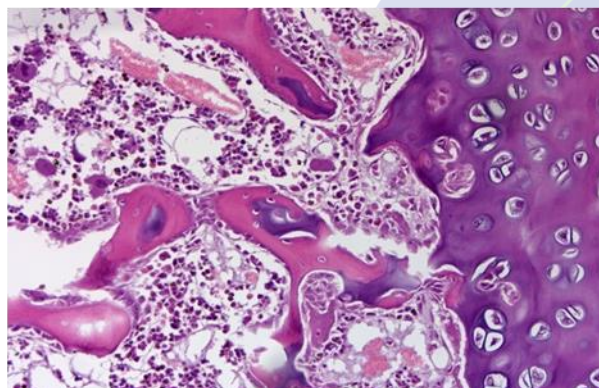
- 6 megapixel sensor-IMX183 · Sensor Size-1"
- Pixel Size-2.4x2.4μm · Resolution -5496 x 3672

ISP color-interpolation algorithm

Effectively improve the color deviation of the sensor
Perfectly restore the true color of the sample

USB3.0 Stable high-speed transmission

Simple and convenient while ensuring a stable rate
At full resolution, 35 fps rapid imaging can be achieved



Product Model	MI 20
Sensor Vendor	SONY
Sensor Type	CMOS
Sensor Size	1"
Color/Mono	Color
Pixel Size	2.4 x 2.4(μm)
Resolution	5496(H) x 3672(V)
Frame	15fps @20MP
Shutter Mode	Rolling
Exposure Time	0.13ms-15s
Automatic Set	Exposure, Color Scale, White Balance
Manually Set	Exposure, Gain, Noise Reduction, Gamma, Flat Field Correction
Color Temperature	2000-15000K
ADC Depth	12Bit
PC Software	Mosaic V 2.0
Picture Format	JPG / PNG / TIFF
Operating System	Windows 10
Camera software	included
Data Interface	USB 3.0
Optical Interface	Standard C Mount
Camera Size	68 x 68 x 46 mm
Camera Weight	330 g
Operating Temperature	0-60°C