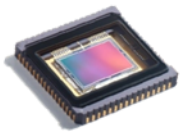


OPTA-TECH MI 5 FL



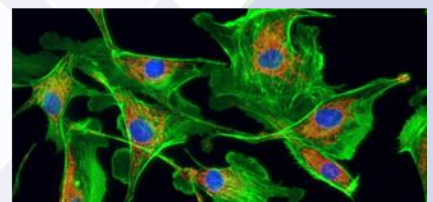
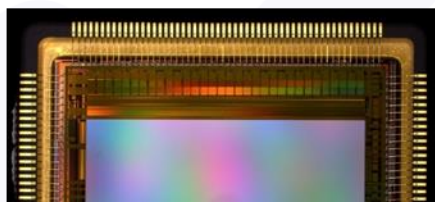
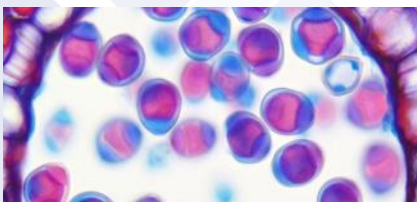


Sony professional CMOS sensor

Uses a Sony 5 megapixel CMOS 2/3" sensor-IMX264, with 3.45 x 3.45 μm pixels. The resolution of the captured image can reach 2448 x 2048. Images taken at low magnification readily resolved.

○ Excellent color reproduction

The use of core ISP color-interpolation algorithm effectively corrects the color deviation of the sensor's spectral response, to simulate the human eye's sensitivity to color. The true color in the eyepiece, whether it is a biological bright field, stereo or fluorescence image.



○ Advanced Global Shutter Technology

With global shutter technology, all pixels are exposed simultaneously, which allows accurate tracking and capture of dynamic samples and provides, crisp, undistorted, clear images of fast moving specimens.



Global shutter



Rolling shutter

Specification:

Product Model	MI 5 FL
Sensor Model	IMX264LQR-C
Sensor Type	CMOS
Sensor Size	2/3"
Color/Mono	Color
Pixel Size	3.45 x 3.45(μm)
Resolution	2448(H) x 2048(V)
Frame	35fps @5MP
Shutter Mode	Global
Exposure Time	0.13ms-15s
Automatic Set	Exposure, Color Scale, White Balance
Manually Set	Exposure, Gain, Noise Reduction, Gamma, Flat Field Correction
Color Temperature	2000-15000K
ADC Depth	12Bit
PC Software	included
Picture Format	JPG / PNG / TIFF
Operating System	Windows
Microscope application	BF/FL/PH
Data Interface	USB 3.0
Optical Interface	Standard C Mount
Camera Size	68 x 68 x 46 mm
Camera Weight	330 g