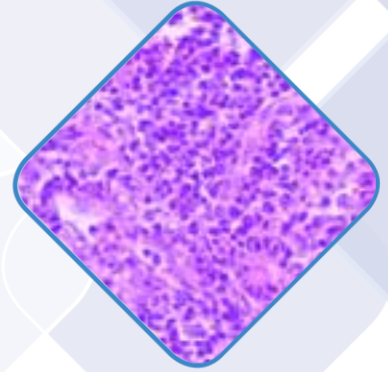
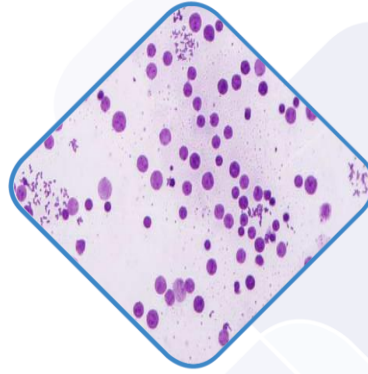


HDMI PRO 4K series





HDMI 4K PRO series

The OPTA-TECH HDMI PRO 4K microscope camera sets new standards on the microscope cameras market – both in terms of image quality and overall functionality. This new camera performs a very good professional level at processing a larger amount of 4K resolution data.

Technical parameters

Camera sensor	<ul style="list-style-type: none"> - Sensor: 1 / 1.2" SONY (IMX485LQJ-C) -: 1920x1080 (Full HD) or 4K 8MP - max resolution: 3840x2160 (8MP) - exposure time 1ms ~ 1 s. kontrolowany automatycznie i manualnie - White balance – automatic, manual
Data Interface	- HDMI, USB3.0, USB2.0, LAN
Framerate	- 20fps@USB 3.0, 30fps@HDMI, 30fps@LAN
Microscope connection	- C-mount
PC Configuration	- CPU: Intel Core i5 or better(Quad or more Core), RAM: 8G or more System: Windows 10/11 - 64 bit
Image settings	<ul style="list-style-type: none"> - built-in on-screen image settings menu with possibility of camera control by mouse directly connected to the camera - automatic parameter setup (live preview) - included PC software for camera control.
Display and recording	<ul style="list-style-type: none"> - live preview on a TV or HD monitor - simultaneous comparison on one screen of live preview of sample and of image recorded earlier - record movies on a memory card - transfer of the image to the computer - recording images and video formats: JPG, BMP, TIFF, AVI; - image HDR function (High Dynamic Range) - the ability to perform measurements in the preview "live" mode on sample without saving the images on the hard disk - image sticking function in the XY plane - photo colorization feature according to the standard fluorescence staining (over 200 presets for common color staining)
Accessories	- mouse, HDMI cable, USB cable, AC adapter