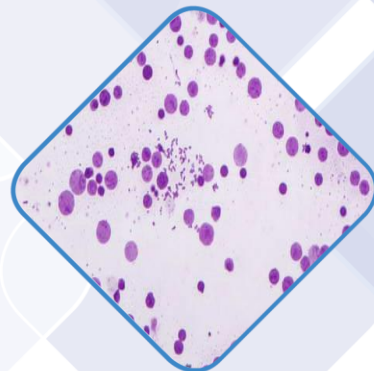


LAB 40 Series Microscope





LAB 40 Series Microscope – multi head version

LAB 40 is a high-class, new generation microscope with a very wide selection of accessories and razor-sharp optics that make it the best solution to every user's research needs. Additional viewing heads allow for fast live consultations of difficult cases. LAB40 microscope with multiple viewing heads is a perfect choice also for medical universities or other microscope training purposes.



This series of microscopes is designed for laboratories, hospitals and veterinary clinics. LAB 40 microscope can be equipped with a digital image acquisition system. Modern software enables the user to automatically or manually adjust the camera parameters from the computer, archive the captured images with ease and conduct measurements. Optional image acquisition, archiving and analysis software can be enhanced with additional functions, based on the user's needs.

Technical parameters*

Optics	Color corrected infinity optical system
Main viewing head	-Binocular, trinocular (optional). Adjustable interpupillary distance: 54-75 mm. Eyepiece inclination: 30°. Dioptic correction: +/- 5 diopters in left eyepiece.
Consultation viewing heads	Binocular; Adjustable interpupillary distance: 54-75 mm. Eyepiece inclination: 30°. Dioptic correction: +/- 5 diopters in left eyepiece.
Eyepieces	Wide field of view 10X/22 or 10X/20 mm high eye-point plan with eye-cup.
Revolving nosepiece	Quadruple or quintuple.
Objectives	Infinity planachromatic: <ul style="list-style-type: none"> - 4x/N.A.0.10 - 10x/N.A.0.25 - 20x/N.A.0.40 - 40x/N.A.0.65 - 60x/N.A.0.85 (optional) - 100x/N.A.1.25
Condenser	Condenser: N.A.1.2 / 0.22 (SWING).
Focus adjustment	Coaxial coarse and fine focus adjustment with coarse focus movement tension adjustment. Movement range: 30 mm. Movement precision: 0,002 mm.
Stage	Double layer mechanical stage with convenient vertical XY manipulators. Dimensions: 175 x145 mm. Movement range: 76x50 mm.
Illumination	Transmitted adjustable light source: 10W LED for multi head configuration.
Pointer	3 colors LED, brightness adjustment pointer with joystick
Base	Ergonomic "Y" type , metal base with grip for moving the device and built-in hex adjustment key slot.
Consultation viewing heads adapter	Available configuration: 2 persons, 3 persons, 5 persons, 10 persons
Optional accessories	Phase contrast kit, polarization kit, microscope camera, image capture and analysis software.

** Due to constant technological progress, the parameters provided above are purely informational in nature, depict an example configuration and are liable to change*